

PASSAGE INFORMATION INWARDS

NAME OF VESSEL : _____ DATE: _____

POB TIME: _____ GT: _____

BERTH: DLNG LOA: _____ DRAUGHT F: _____

STARBOARD SIDE ALONGSIDE DRAUGHT A: _____

DRAUGHTS & UKC

	D.W.R.	MA2 BUOY
Min. Depth	13.2m	11.9m
Tide @ -----		
Total Depth		
Max Draught		
Static UKC		
Squat/List		
Dynamic UKC		

TIDE HEIGHTS

Tide @		
Tide @		CPP
Tide @		
Tide @		
Tide @		DARWIN HARBOUR
Tide @		
Tide @		
Tide @		
Tide @		

DARWIN HW/LW

	TIME	HEIGHT
HW/LW		
HW/LW		
HW/LW		

VHF CHANNELS

Darwin Harbour

DLNG Berth & Tugs

Mooring tool box meeting held?

Gyro Compass Error: _____ High/Low

Hand Steering tested? NFU Steering tested? Main Engine tested ahead/astern?

Pilot Card completed? Anchor Ready?

Bow Thruster: Y N HP/KW

ANY condition or defect that the pilot should be made aware of? Y N

Arrival: Slow vessel to ≤10 kts passing No.6 buoy to make fast Tug 4, and ≤8 kts passing Emery Pt., to make fast Tugs 2 & 3. Then approx 6kts at MA2 buoy, and ≤3 kts passing MA4 buoy, at a distance 1 to 1.5 cables off.

Standard Manoeuvre: When vessel is approximately 5 cables from the berth (distance adjusted depending on tide), swing bow to starboard using tugs as required. Stern first to berth (≤2 knots astern) to a position approx 100m off. Manoeuvre the vessel alongside using tugs 2 & 3, M.E., B.T., & Tug 4 to counter tide as required.

Contingencies: ABORT POINT 1, ivo No.9 buoy – swing vessel to port. ABORT POINT 2, ivo MA4 buoy – swing vessel in Middle Arm/swinging basin with tugs as required. ABORT ANCHORAGE – C1 is available.

CLOSING SPEEDS:
 @ 50m: < 0.25kts
 @ 25m: < 20cm/s
 @ 10m: 5-10 cm/s
 LANDING @ < 5 cm/s
 Berth Limit: 10 cm/s

TIMINGS:

_____ POB

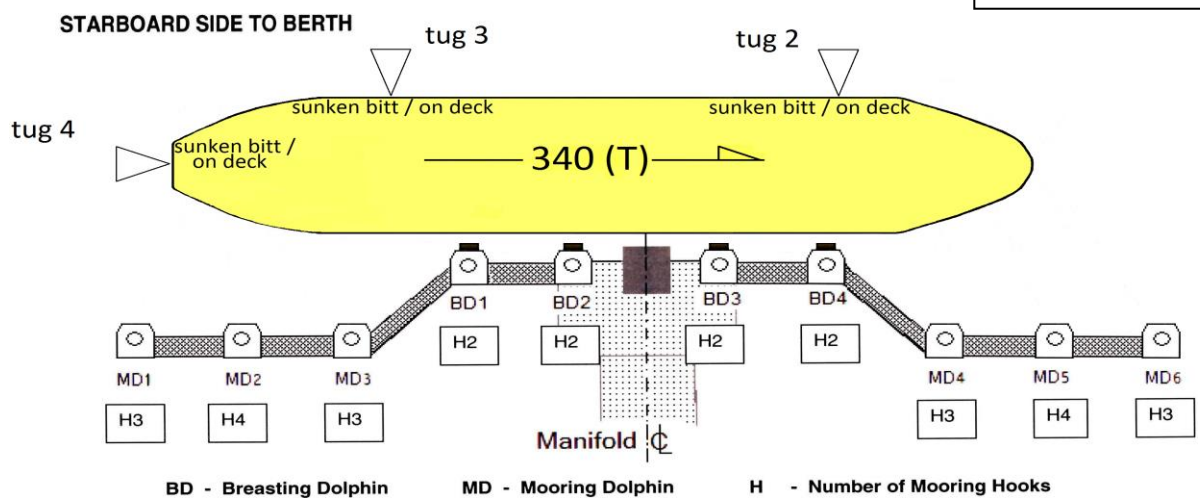
_____ 1&2 buoys

_____ No.6 buoy (Tug 4)

_____ MA1 Buoy (Tug 2 & 3)

_____ Swing

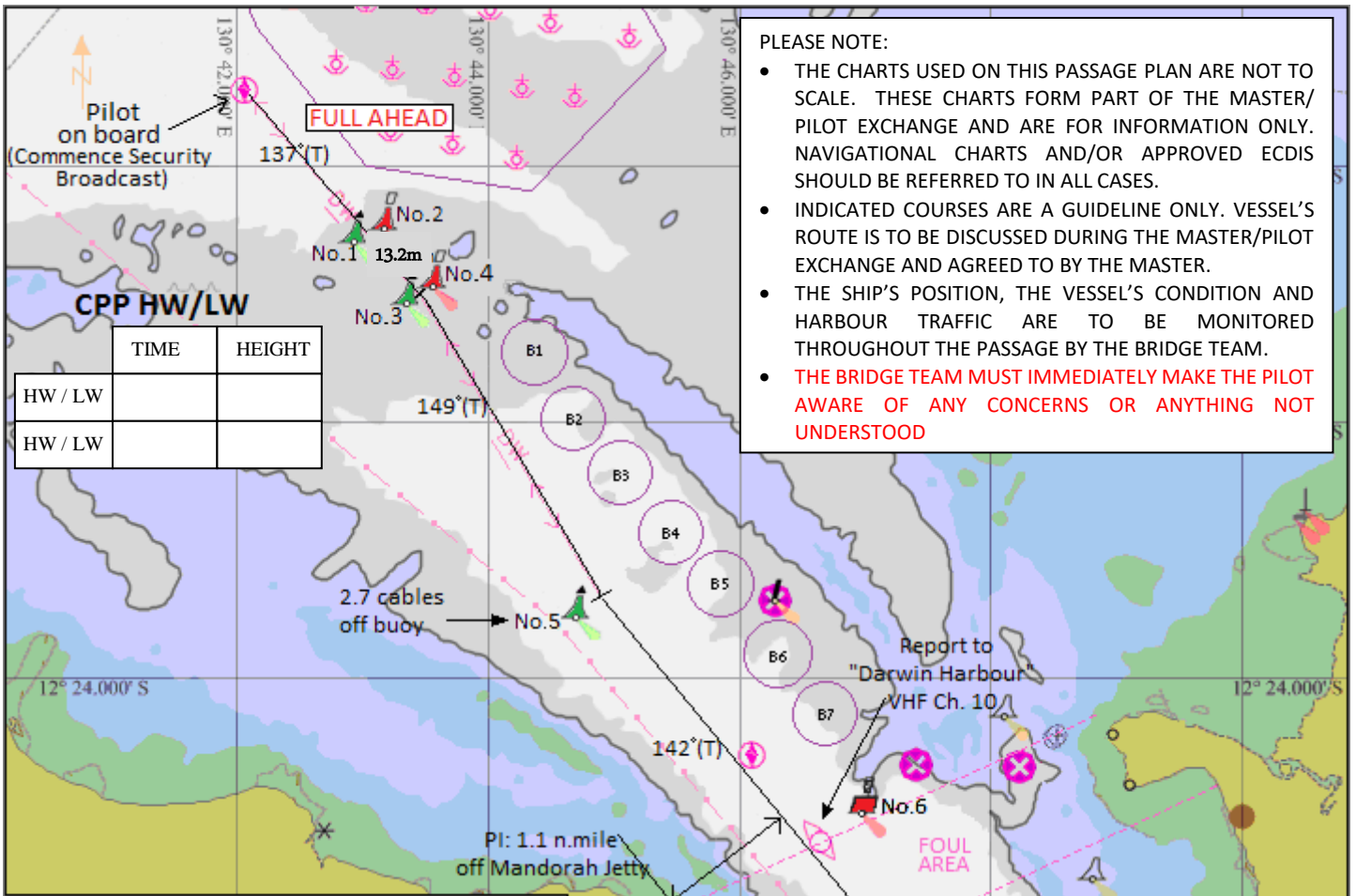
_____ 1st Line



THE PRINCIPLES OF BRIDGE RESOURCE MANAGEMENT MUST BE ADHERED TO AT ALL TIMES

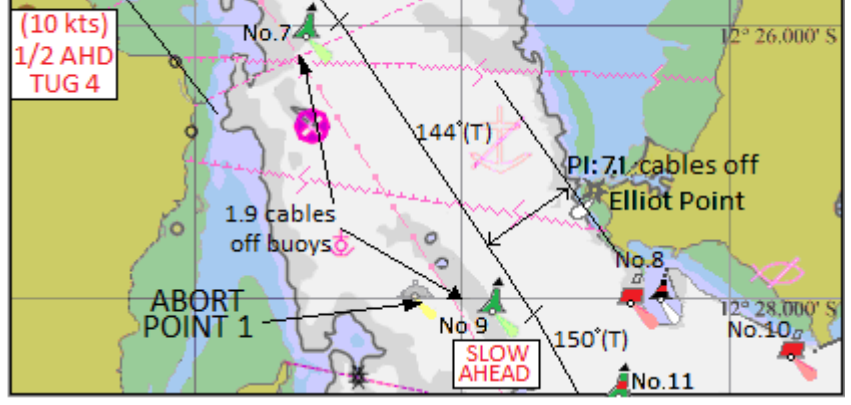
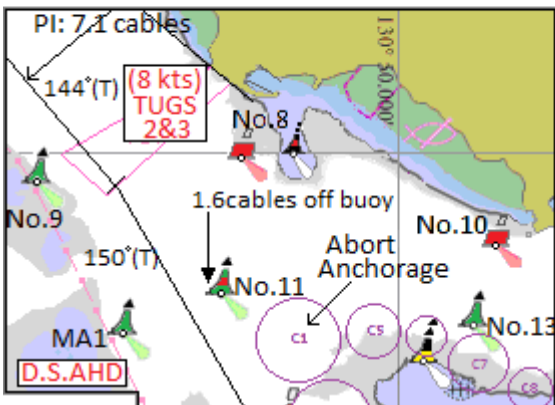
MASTER: _____ SIGNATURE: _____

PILOT: _____ SIGNATURE: _____



PLEASE NOTE:

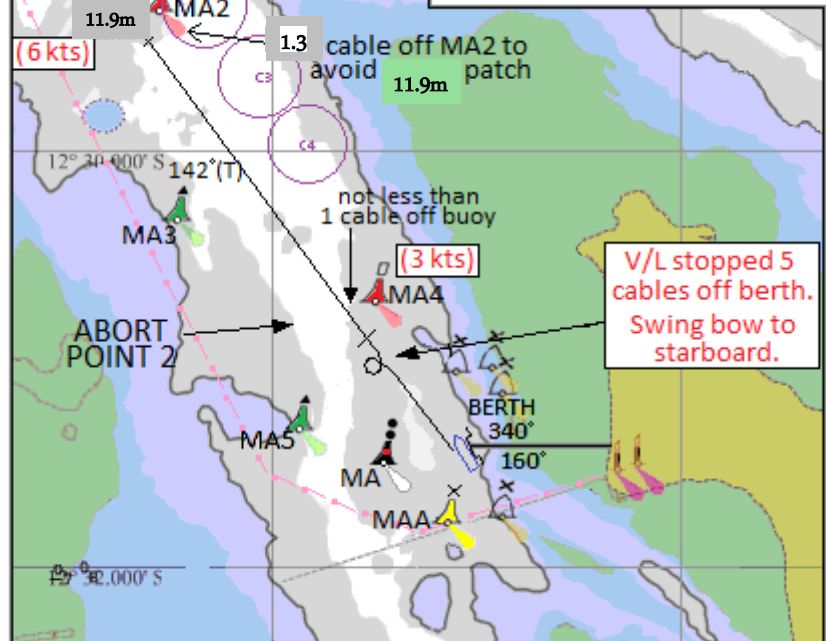
- THE CHARTS USED ON THIS PASSAGE PLAN ARE NOT TO SCALE. THESE CHARTS FORM PART OF THE MASTER/PILOT EXCHANGE AND ARE FOR INFORMATION ONLY. NAVIGATIONAL CHARTS AND/OR APPROVED ECDIS SHOULD BE REFERRED TO IN ALL CASES.
- INDICATED COURSES ARE A GUIDELINE ONLY. VESSEL'S ROUTE IS TO BE DISCUSSED DURING THE MASTER/PILOT EXCHANGE AND AGREED TO BY THE MASTER.
- THE SHIP'S POSITION, THE VESSEL'S CONDITION AND HARBOUR TRAFFIC ARE TO BE MONITORED THROUGHOUT THE PASSAGE BY THE BRIDGE TEAM.
- **THE BRIDGE TEAM MUST IMMEDIATELY MAKE THE PILOT AWARE OF ANY CONCERNS OR ANYTHING NOT UNDERSTOOD**



BERTHING LIMITS
 Wind: 20kts (Unless SE'ly then 25kts)
 Tide: 2kts

DEPTHS:
 D.W.R. 13.2m
 Berth: 13.5m

Swing Area (min depth at north end of jetty): 12.0m
 West of MA2 buoy: 11.9m



BRIDGE TEAM:
 MAINTAIN LOOKOUT VISUALLY AND BY RADAR. FOLLOW PILOT PASSAGE PLAN AND INFORM WHEN THERE IS AN OBSERVED DEVIATION FROM THE AGREED PLAN.
IF IN DOUBT CONSULT PILOT

MOORING LINES ON ARRIVAL:
 ALL LINES ASHORE WITH HEAVING LINES & YOYO GEAR. ONE LINE AT A TIME. SPRINGS FIRST, THEN BRESTS, THEN HEAD/STERN LINES. DON'T HEAVE UP UNTIL MOORING MEN ARE CLEAR OF MOORING DOLPHINS.
 MOORING HOOKS: SWL 125t
 MOORING HOOK ALARMS SET TO 40t

TUG INFORMATION:
 SVITZER STOCKTON & MACQUARIE: ASD 82T
 SVITZER PALMERSTON & STOKES: ASD 83T
 MATARANKA: ASD 70T
 WYONG: ASD 45T

DARWIN PILOT PASSAGE PLAN

Route: Outer Pilot Boarding Ground to DLNG

INWARD BOUND

TOTAL DIST 14.6nm

Waypoint Name	LAT	LONG	Course x Distance to next Waypoint	Total Distance to Waypoint	Comments
OPBG	12° 19.561' S	130° 42.042' E	137° x 2.1nm		
3&4 Buoys	12° 21.108' S	130° 43.518' E	149° x 2.6nm	2.1nm	
No.5 Buoy	12° 23.344' S	130° 44.891' E	142° x 1.6nm	4.7nm	
IPBG (TUG 4 rendezvous)	12° 24.616' S	130° 45.907' E	142° x 1.7nm	6.3nm	
No.7 Buoy	12° 25.951' S	130° 46.975' E	144° x 2.7nm	8.0nm	Pass 1.1nm off Mandorah Jetty
No.9 Buoy (TUG 2 & 3)	12° 28.151' S	130° 48.609' E	150° x 1.6nm	10.7nm	Pass 0.7nm off Elliott Point
MA2 Buoy	12° 29.545' S	130° 49.432' E	142° x 1.6nm	12.3nm	Pass 0.13nm off MA2 (clear of 11.9m patch)
MA4 Buoy	12° 30.844' S	130° 50.473' E	144° x 0.7nm	13.9nm	Pass 0.1nm – 0.15nm off MA4
DLNG Berth	12° 31.434' S	130° 50.913' E		14.6nm	