

Port Security Instruction 144/2019

Active Port Security Zones

Version	Date	Reason for Change	Document Paragraph Ref	Made By	Description of Change
1.0	04/01/2016	Initial Version	Nil	Wayne Bodkin	Initial Version – Approved by Melissa Reiter GMCS

Prelude:

Attached is a map of the wharf showing which Landside and Waterside Port Security Zones are active for the visit of this vessel.

Relevant legislation includes:

- *Maritime Transport and Offshore Facilities Security Act 2003*
Part 6 – Maritime Security Zones
Division 2 – Port Security Zones
102 Establishing Port Security Zones

Instruction:

In accordance with the Darwin Port Maritime Security Plan, the attached map shows the Port Security Zones that will be activated whilst the Cruise ship 'Coral Adventurer' is alongside at **Fort Hill Wharf**

Landside Restricted Zone (LRZ's)

The Active Landside Restricted Zones are **FHL03** through **FHL05**. These are active from **07:00 on Thursday the 13th of June** until 30 minutes after the vessel departs. They are indicated in Red and Green.

Maritime Security Identification Cards (MSIC's) must be worn and displayed by all persons inside the Active LSRZ. If non MSIC holders wish to enter the zone they must be escorted by an MSIC holder.

Waterside Restricted Zone (WRZ's)

The Active Waterside Restricted Zone is **FHW01** and is active from **07:00 on Thursday the 13th of June** until 30 minutes after the vessel departs. It is indicated in Blue.

Maritime Security Identification Cards (MSIC's) must be worn and displayed by all persons inside the Active WSRZ. If non MSIC holders wish to enter the zone they must be escorted by an MSIC holder.

Waterside Patrols will be undertaken by Darwin Port vessels whilst the area is active.

Safety:

Appropriate PPE must be worn at all times.

All non essential vehicles must vacate the wharf deck by 06:30 on Thursday 13th of June

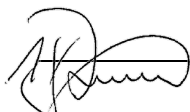
Darwin Port Contact Details:

Port Security Officer	Wayne Bodkin	8947 7215 or 0448 658 652
Harbour Control Officer	Duty Officer	8922 0710
Maritime Security Guard	Duty Officer	8947 4205 or 0401 110 320
EAW Cargo Officer	Duty Officer	0488 527 136

DARWIN PORT

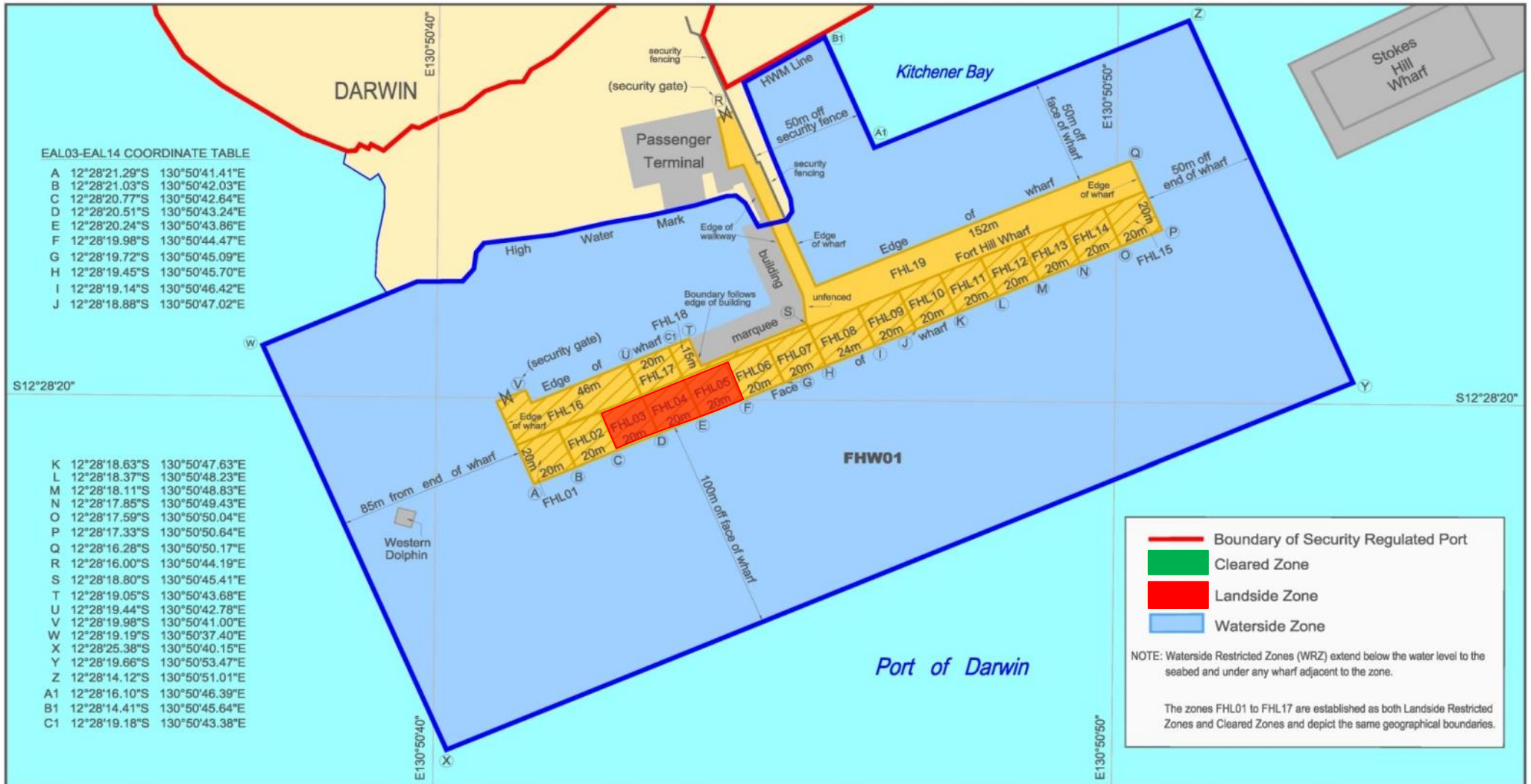
Issue Status Version 1.1
Issue Date **12/05/2019**
Authorised By Peter Dummett (GM Port Development)

Signature



Date





0 25 50 75 100 metres

SCALE 1:1750 (A3)

DATUM: GEODETIC DATUM OF AUSTRALIA 1994 (GDA94)

PORT OF DARWIN

Waterside and Landside Zones

October 2012

This map shows the boundaries of the security regulated port and maritime security zones for the purposes of the Maritime Transport & Offshore Facilities Security Act 2003. This map is not intended for navigational purposes.

