

INPEX ILNG & ILPG PASSAGE INFORMATION OUTWARDS

NAME OF VESSEL: _____ **DATE:** _____
POB TIME: _____ **GT:** _____
BERTH ILPG / ILNG **LOA:** _____ **DRAUGHT F:** _____
PORT SIDE ALONGSIDE **DRAUGHT A:** _____

DRAUGHTS & UKC

	Swing Basin	DWR
Min. Depth	12.6 m	13.1m
Tide @ -----		
Total Depth		
Max Draught		
Static UKC		
Min Req'd UKC	1.5 m	2.0 m
Comply UKC	Yes / No	Yes / No

TIDE HEIGHTS

Tide @		CPP
Tide @		
Tide @		
Tide @		DARWIN HARBOUR
Tide @		
Tide @		
Tide @		
Tide @		

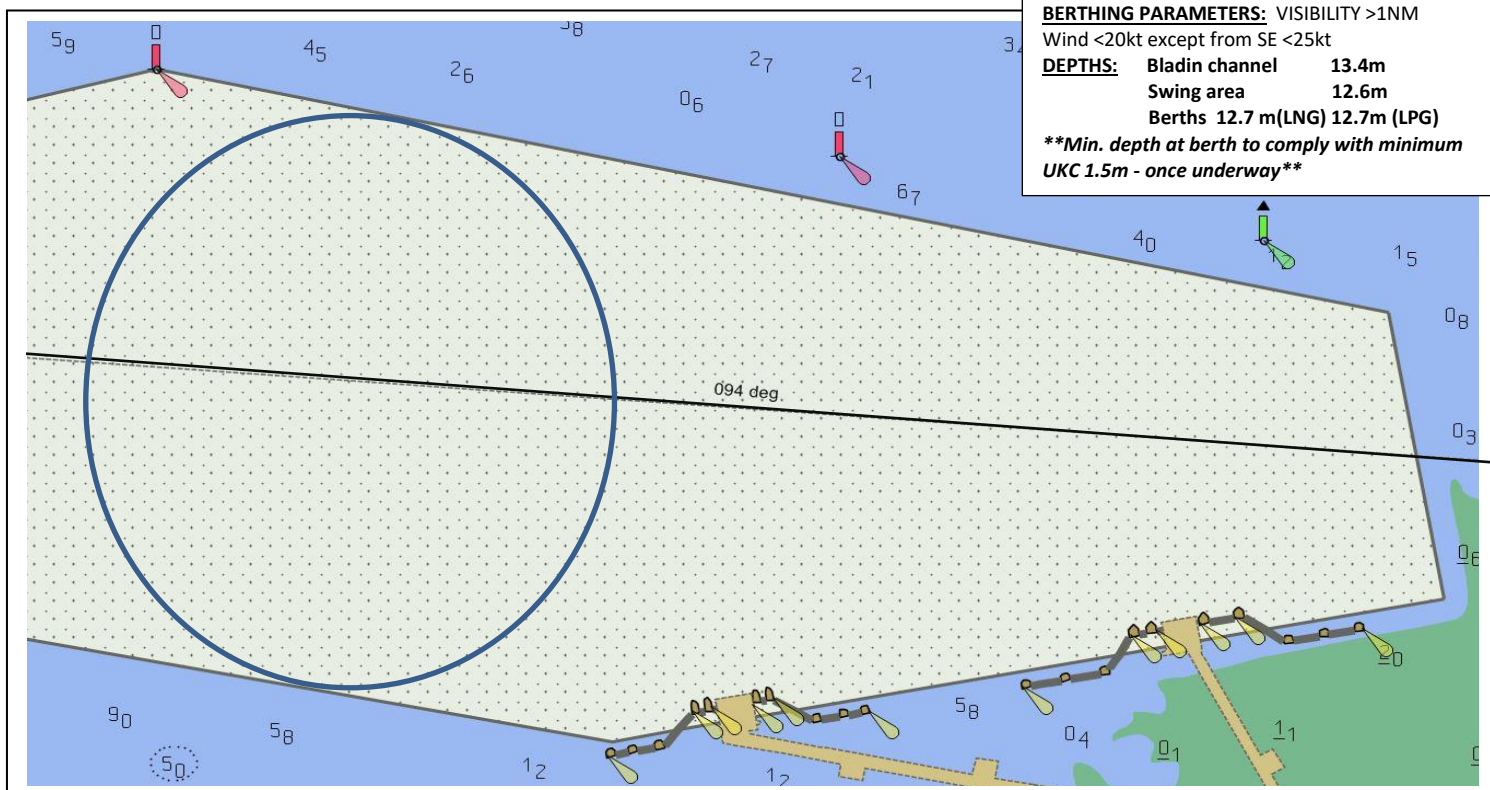
DARWIN HW/LW

	TIME	HEIGHT
HW/LW		
HW/LW		
HW/LW		

VHF CHANNELS

Darwin Harbour	Ch 10
ILNG Berth & Tugs	Ch 88

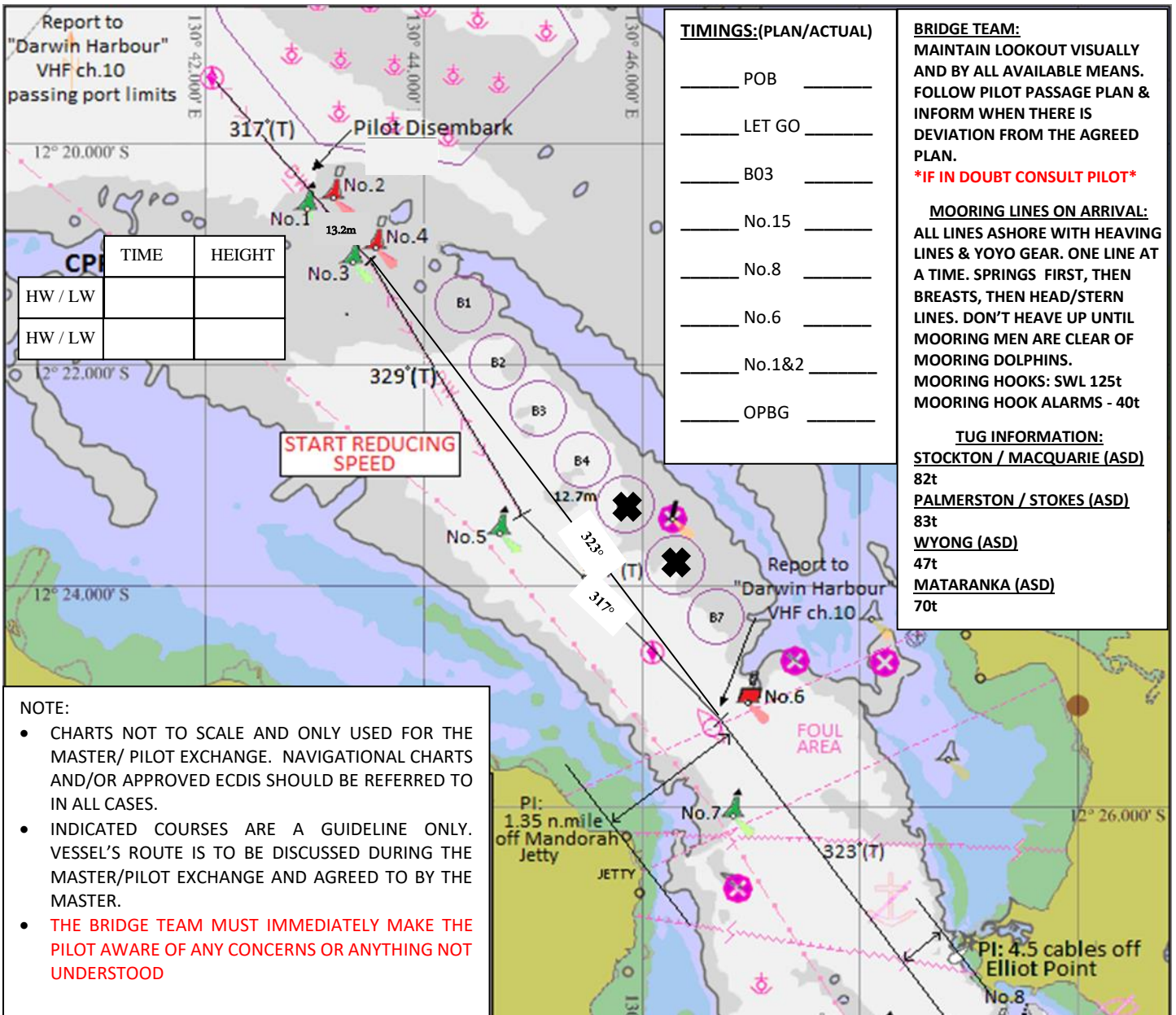
Mooring tool box meeting held
 Gyro Compass Error: _____ **High/Low**
 Hand Steering tested **NFU Steering tested**
 Pilot Card completed **Anchors Ready**
Bow Thruster: Y N **HP/KW**
 Main Engine tested ahead/astern
ANY condition or defect that the pilot should be made aware of Y N



BERTHING PARAMETERS: VISIBILITY >1NM
 Wind <20kt except from SE <25kt
DEPTHS: Bladin channel 13.4m
 Swing area 12.6m
 Berths 12.7m(LNG) 12.7m (LPG)
****Min. depth at berth to comply with minimum UKC 1.5m - once underway****

THE PRINCIPLES OF BRIDGE RESOURCE MANAGEMENT MUST BE ADHERED TO AT ALL TIMES

MASTER: _____ **SIGNATURE:** _____
PILOT: _____ **SIGNATURE:** _____



TIMINGS:(PLAN/ACTUAL)

_____ POB _____
 _____ LET GO _____
 _____ B03 _____
 _____ No.15 _____
 _____ No.8 _____
 _____ No.6 _____
 _____ No.1&2 _____
 _____ OPBG _____

BRIDGE TEAM:

MAINTAIN LOOKOUT VISUALLY AND BY ALL AVAILABLE MEANS. FOLLOW PILOT PASSAGE PLAN & INFORM WHEN THERE IS DEVIATION FROM THE AGREED PLAN.

IF IN DOUBT CONSULT PILOT

MOORING LINES ON ARRIVAL:

ALL LINES ASHORE WITH HEAVING LINES & YOYO GEAR. ONE LINE AT A TIME. SPRINGS FIRST, THEN BREASTS, THEN HEAD/STERN LINES. DON'T HEAVE UP UNTIL MOORING MEN ARE CLEAR OF MOORING DOLPHINS.

MOORING HOOKS: SWL 125t
 MOORING HOOK ALARMS - 40t

TUG INFORMATION:

STOCKTON / MACQUARIE (ASD)

82t

PALMERSTON / STOKES (ASD)

83t

WYONG (ASD)

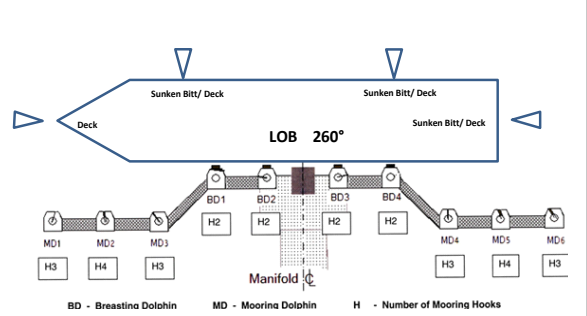
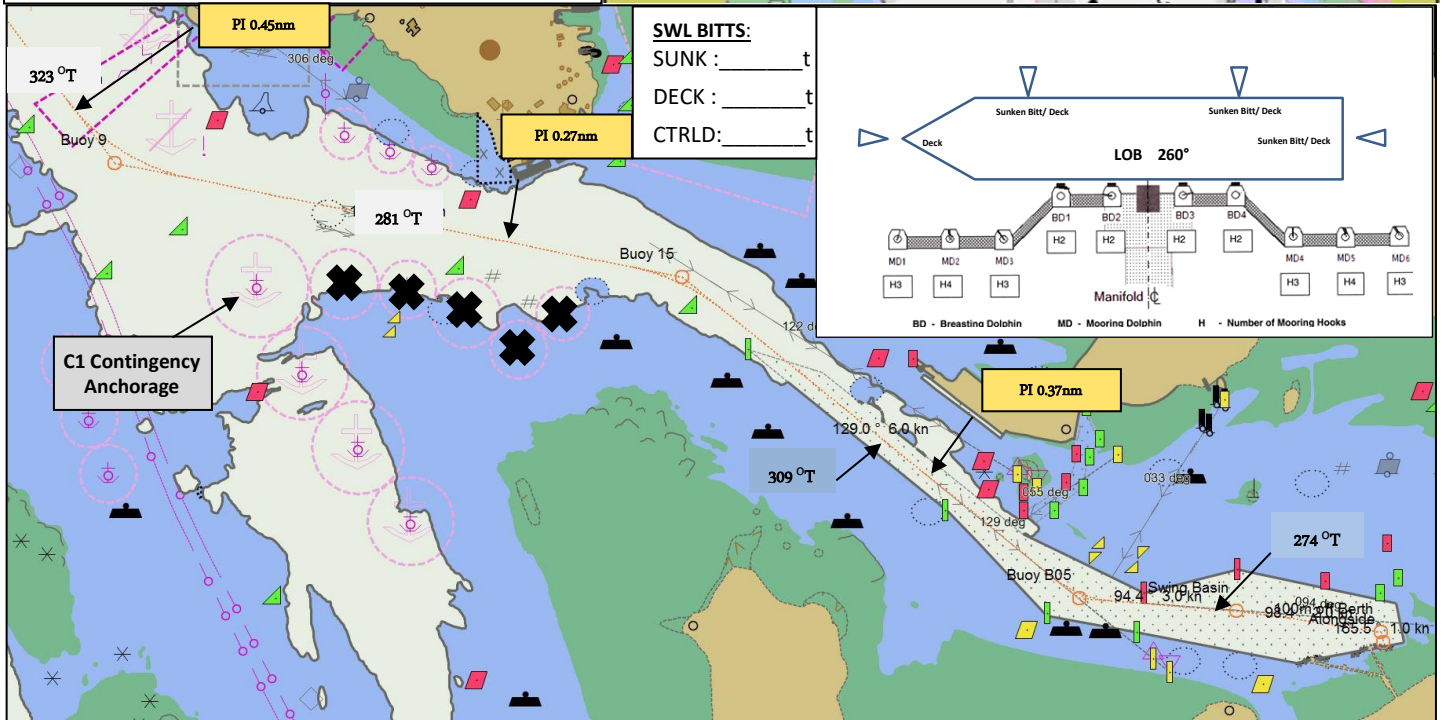
47t

MATARANKA (ASD)

70t

NOTE:

- CHARTS NOT TO SCALE AND ONLY USED FOR THE MASTER/ PILOT EXCHANGE. NAVIGATIONAL CHARTS AND/OR APPROVED ECDIS SHOULD BE REFERRED TO IN ALL CASES.
- INDICATED COURSES ARE A GUIDELINE ONLY. VESSEL'S ROUTE IS TO BE DISCUSSED DURING THE MASTER/PILOT EXCHANGE AND AGREED TO BY THE MASTER.
- **THE BRIDGE TEAM MUST IMMEDIATELY MAKE THE PILOT AWARE OF ANY CONCERNS OR ANYTHING NOT UNDERSTOOD**



DARWIN PILOT PASSAGE PLAN (FROM ILNG BERTH TO SEA)

Route: INPEX ILNG to Outer Pilot Boarding Ground (Outward) / Total distance 17.5nm

Waypoint Name		Latitude	Longitude	Course & Distance	DTG	Comment
1	Alongside ILNG	12° 30.524' S	130° 54.791' E	000° x 130mtr	17.5nm	
2	130mtr Off ILNG Berth	12° 30.454' S	130° 54.777' E	274° x 0.62nm	17.43nm	Lift clear from berth
3	Swinging Basin (B06)	12° 30.410' S	130° 54.160' E	274° x 0.46nm	16.68nm	Speed 4kts (Hold 4-4.5kts STW)
4	Buoy B04 (Turn)	12° 30.376' S	130° 53.694' E	288° x 0.41nm	16.22nm	Incremental turn to stbd
5	Buoy B05	12° 30.326' S	130° 53.396' E	309° x 2.27nm	15.81nm	Speed 5.5kts for Tug 3 PI 309° x 0.37nm off EAW
6	Buoy 15	12° 28.816' S	130° 51.486' E	282° x 2.40nm	13.54nm	Speed 8 kts PI 281° x 0.27' off FHW Dolphin
7	Buoy 9	12° 28.325' S	130° 49.082' E	323° x 3.85nm	11.14nm	Speed 12 kts Pass 0.45nm off Elliott Point PI 323° x 0.45' off Elliot Point
8	IPBG / Buoy 6	12° 25.249' S	130° 46.702' E	317° x 2.56nm	7.29nm	Speed 12kts PI 323° x 1.3' off Mandorah Jetty Note: Alternative route straight to Buoys 3&4 (323 x 5.2nm)
9	Buoy 5	12° 23.377' S	130° 44.908' E	329° x 2.64nm	4.73nm	Speed 12kts
10	Buoys 3&4	12° 21.108' S	130° 43.518' E	317° x 2.10nm	2.10nm	Speed 12kts
11	OPBG	12° 19.561' S	130° 42.042' E	0	0	Speed 8kts for pilot disembarkation

DARWIN PILOT PASSAGE PLAN (FROM ILPG BERTH TO SEA)

Route: INPEX ILPG to Outer Pilot Boarding Ground (Outward) / Total distance 17.3nm

Waypoint Name		Latitude	Longitude	Course & Distance	DTG	Comment
1	Alongside ILPG	12° 30.579' S	130° 54.515' E	000° x 130mtr	17.3nm	
2	130mtr Off ILPG Berth	12° 30.510' S	130° 54.501' E	274° x 0.62nm	17.23nm	Lift clear from berth
3	Swinging Basin (B06)	12° 30.410' S	130° 54.160' E	274° x 0.46nm	16.68nm	Speed 4kts (Hold 4-4.5kts STW)
4	Buoy B04 (Turn)	12° 30.376' S	130° 53.694' E	288° x 0.41nm	16.22nm	Incremental turn to stbd
5	Buoy B05	12° 30.326' S	130° 53.396' E	309° x 2.27nm	15.81nm	Speed 5.5kts for Tug 3 PI 309° x 0.37nm off EAW
6	Buoy 15	12° 28.816' S	130° 51.486' E	282° x 2.40nm	13.54nm	Speed 8 kts PI 281° x 0.27' off FHW Dolphin
7	Buoy 9	12° 28.325' S	130° 49.082' E	323° x 3.85nm	11.14nm	Speed 12 kts Pass 0.45nm off Elliott Point PI 323° x 0.45' off Elliot Point
8	IPBG / Buoy 6	12° 25.249' S	130° 46.702' E	317° x 2.56nm	7.29nm	Speed 12kts PI 323° x 1.3' off Mandorah Jetty Note: Alternative route straight to Buoys 3&4 (323 x 5.2nm)
9	Buoy 5	12° 23.377' S	130° 44.908' E	329° x 2.64nm	4.73nm	Speed 12kts
10	Buoys 3&4	12° 21.108' S	130° 43.518' E	317° x 2.10nm	2.10nm	Speed 12kts
11	OPBG	12° 19.561' S	130° 42.042' E	0	0	Speed 8kts for pilot disembarkation